

20 MW
108,000 SF
BUILD TO SUIT

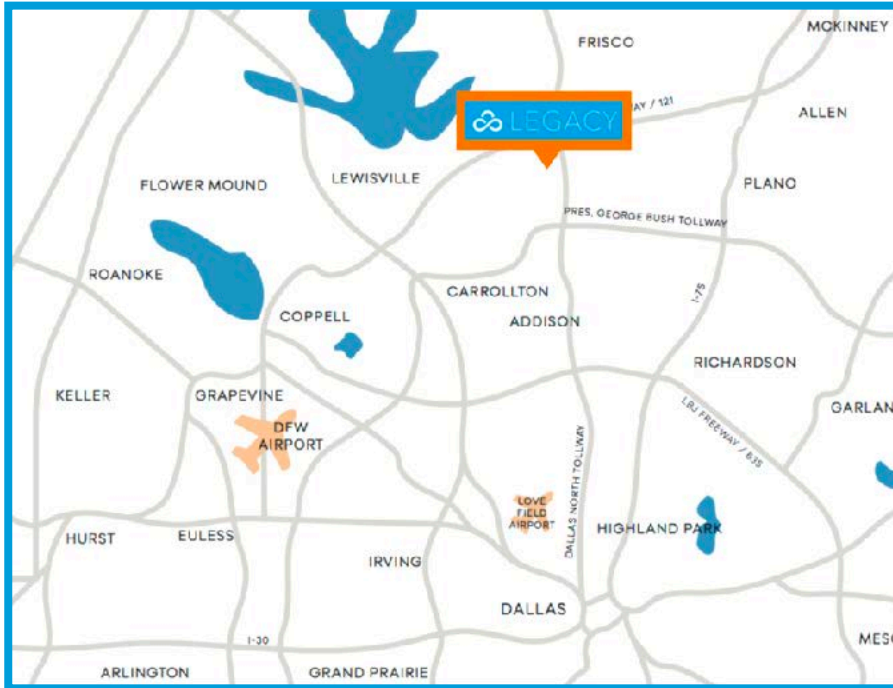


 **SKYBOX**

LEGACY II

PLANO, TX

CAMPUS LOCATION

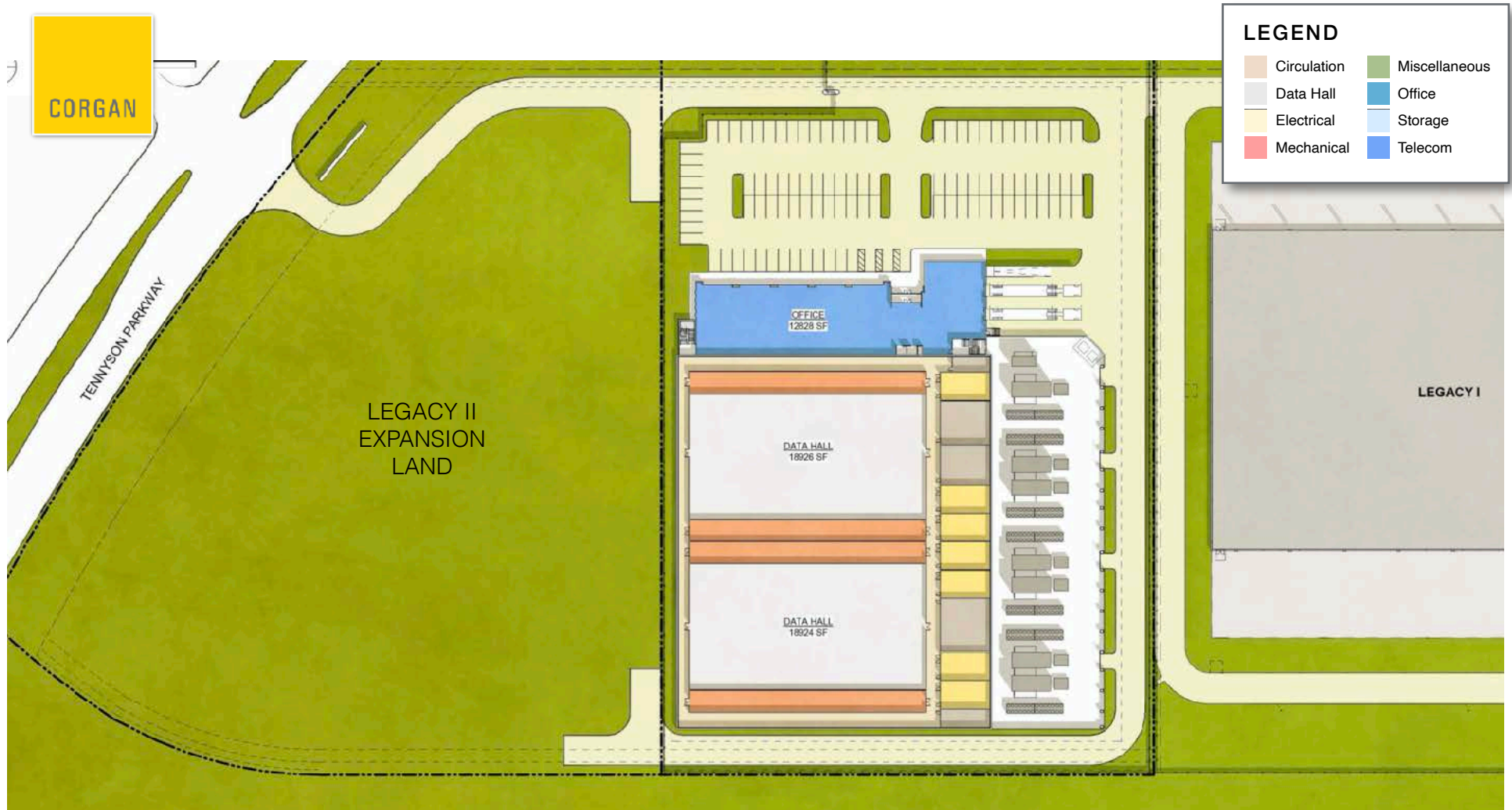


LOCATION / INCENTIVES

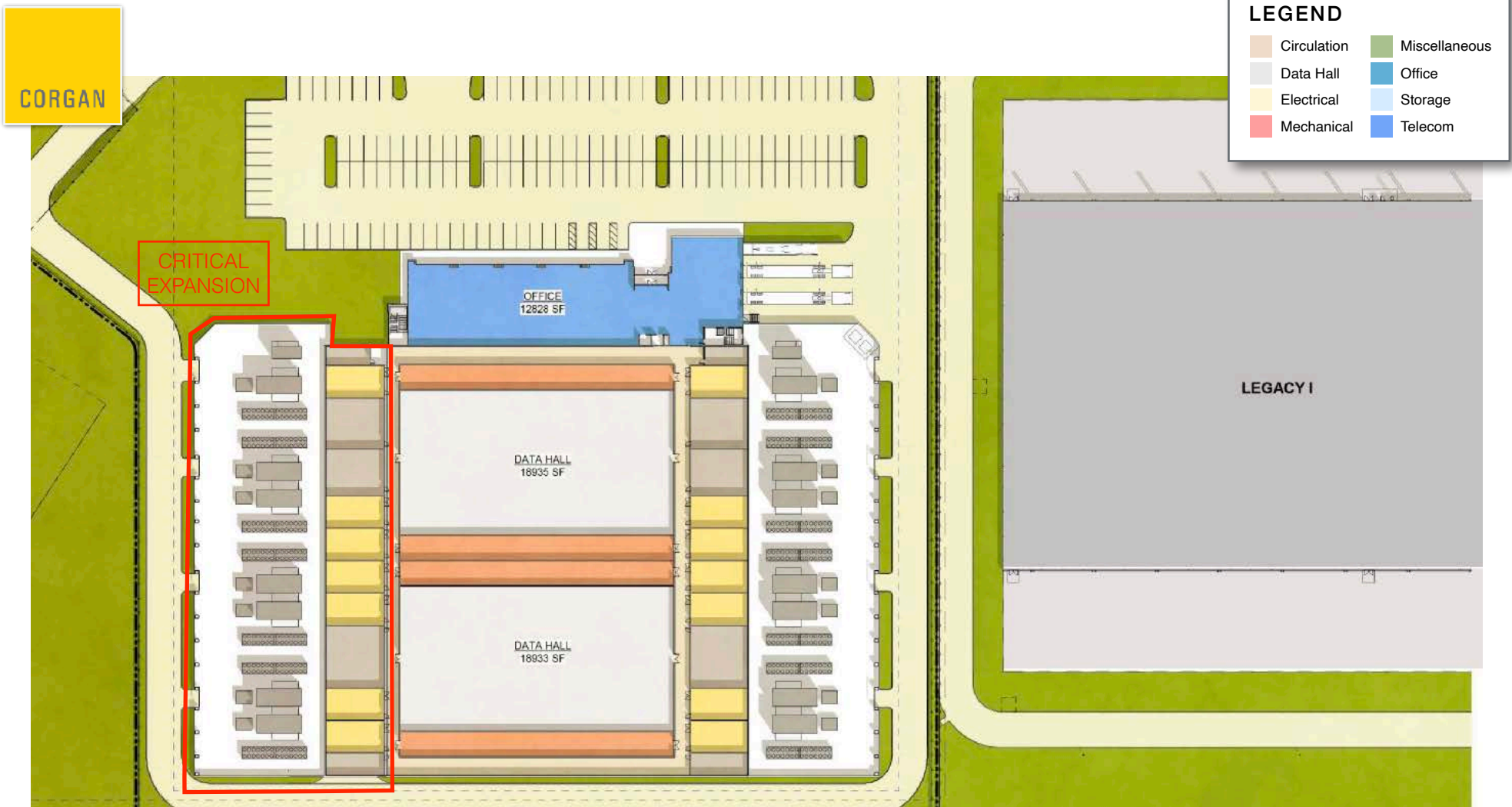
- Located in heart of Legacy West
- Minutes to Dallas North Tollway, I-121, George Bush Turnpike, and 635.
- Diverse, fiber connectivity available (long-haul routes run parallel to the campus) providing low-latency connectivity to 1950 Stemmons (Equinix)
- Site qualifies for Texas Data Center Tax Incentives

PROJECT OVERVIEW

- 108,000 SF Powered Shell (5.27 acre site)
- 37,800 SF Raised Floor (2 x 18,000 SF Data Halls)
- 20 MW Critical Load Delivered
- Densities up to 395 W/SF (6N/5 Infrastructure)
- Fully Secured Campus, Parking, & Service Yard Areas

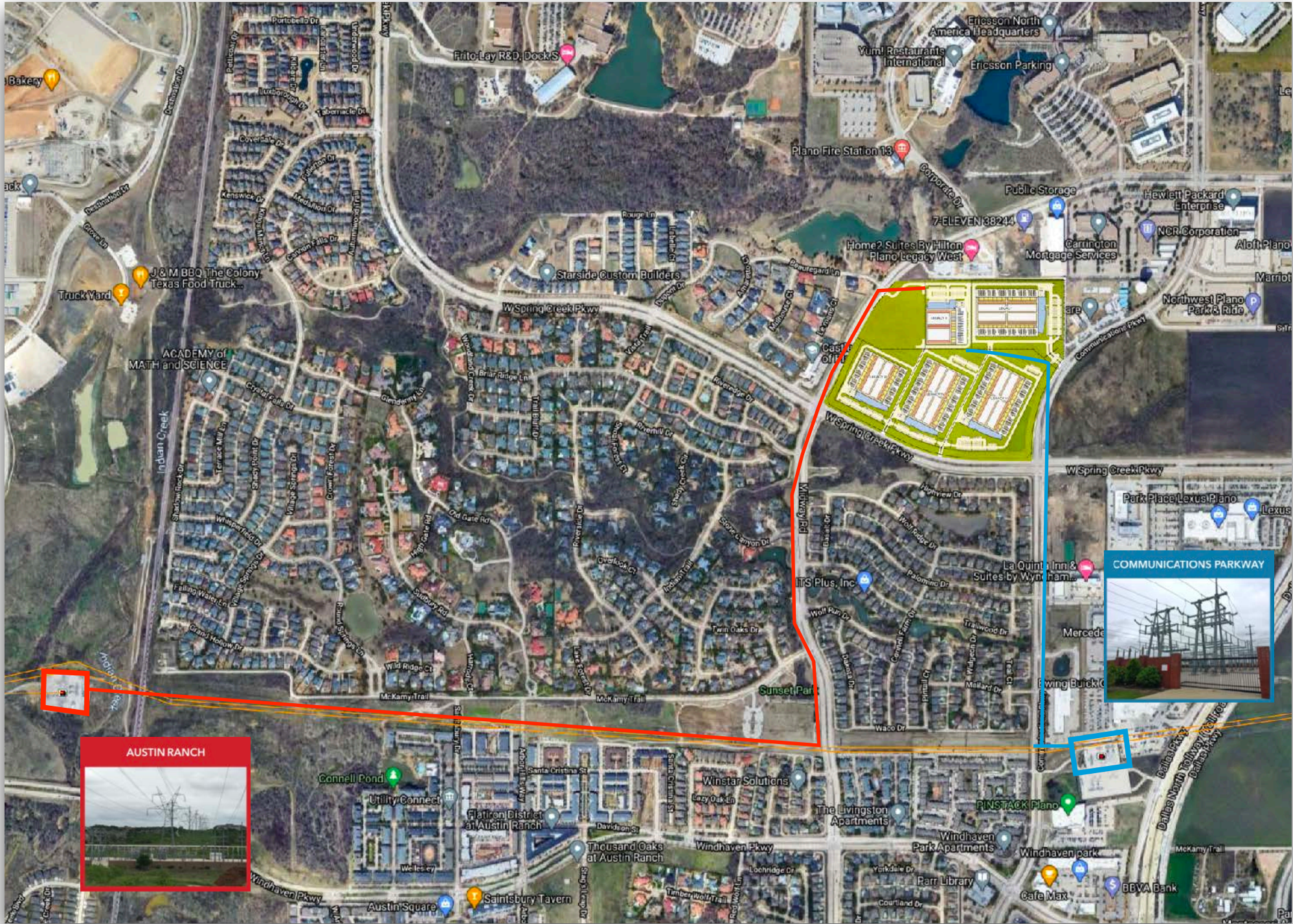


LEGACY II CRITICAL EXPANSION





DUAL FEED ONCOR SUBSTATIONS

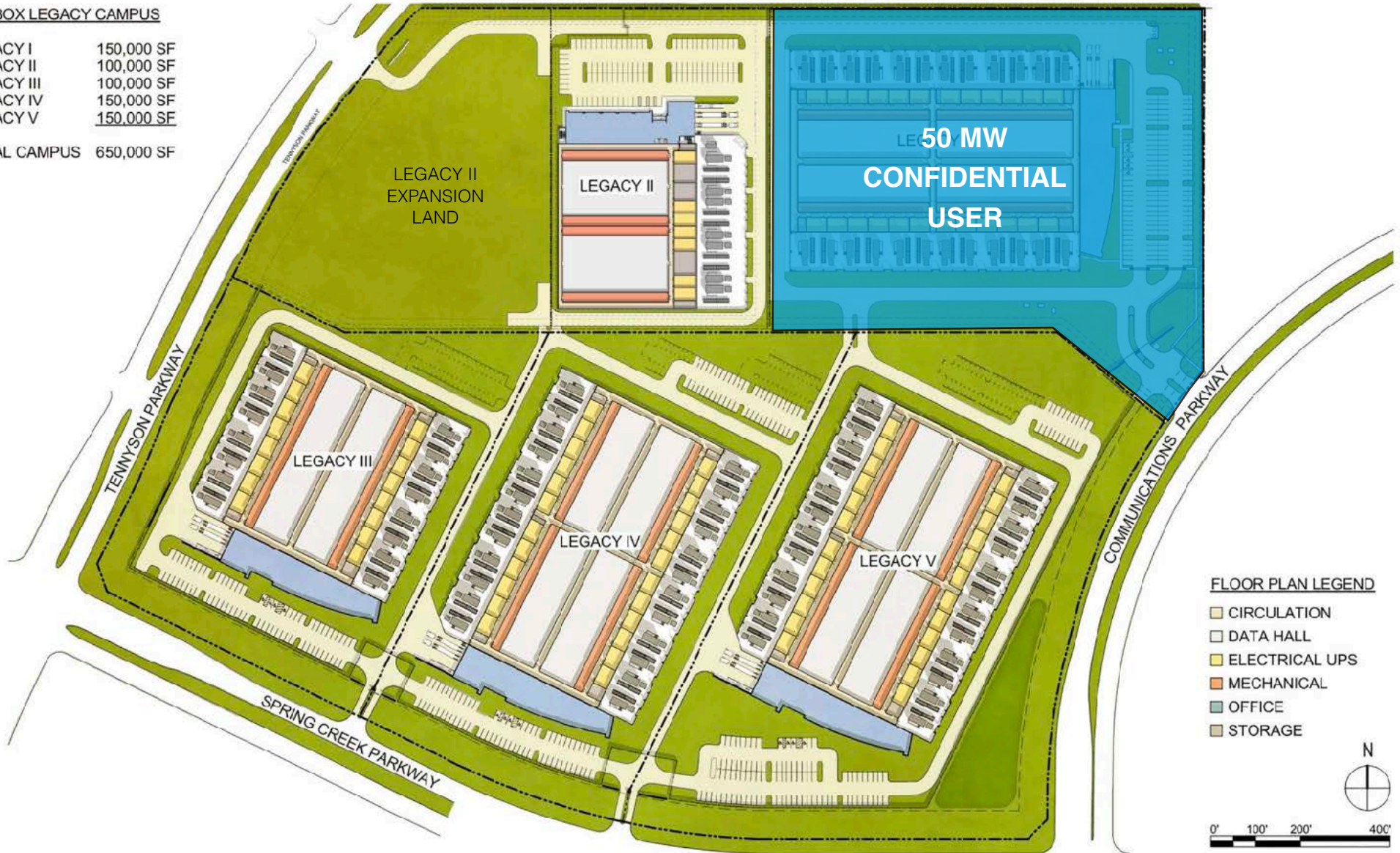


ENDLESS EXPANSION



SKYBOX LEGACY CAMPUS

| | |
|--------------|------------|
| LEGACY I | 150,000 SF |
| LEGACY II | 100,000 SF |
| LEGACY III | 100,000 SF |
| LEGACY IV | 150,000 SF |
| LEGACY V | 150,000 SF |
| TOTAL CAMPUS | 650,000 SF |



LEGACY II SPECIFICATIONS



SPECIFICATIONS

BUILDING / SITE

- Free-Standing, Data Center Designed to Tier III Standards 108,000 SF facility with 37,800 SF raised-floor space

POWER

- 20 MW of total load supplied by dual Oncor substations (Austin Ranch & Communications Pkwy)
- 2N, N+1, or N distribution from utility to the IT environment based on customer direction
- Designed to support up to 6N/5 Infrastructure totaling 20MW of critical load
- Ability to support high density environments (480+ W/SF)
- Custom solutions available
- Top-performing electric reliability
- Business-focused energy efficiency programs

COOLING

- Can accommodate 36" raised floor or slab on grade deployments
- Designed to accommodate high efficiency air-cooled chillers with air-side economization
- 2N, N+1, or N designs available allowing for customer driven redundancy
- Designed to accommodate Bi-directional chilled water loop with concurrently maintainable valve configurations
- Chilled water available for in row and in rack cooling solutions (i.e immersion or rear-door exchangers)

SECURITY & COMPLIANCE

- Site is designed to accommodate 24/7 on-site security & critical facility operations team

CARRIERS



FOR LEASING INFORMATION

Gordon Kellerman, Senior Vice President
Skybox Datacenters
gordon@skyboxdatacenters.com
713-999-4400

ABOUT SKYBOX DATACENTERS

Skybox Datacenters is a leading data center owner, operator and developer with a focus on wholesale enterprise data centers and disaster recovery operations with locations in Dallas, Houston, Chicago, and Northern Virginia. Skybox hosts both SMB and Fortune 500 customers with 24/7 facilities in strategically located campuses with ultimate flexibility for long-term growth.